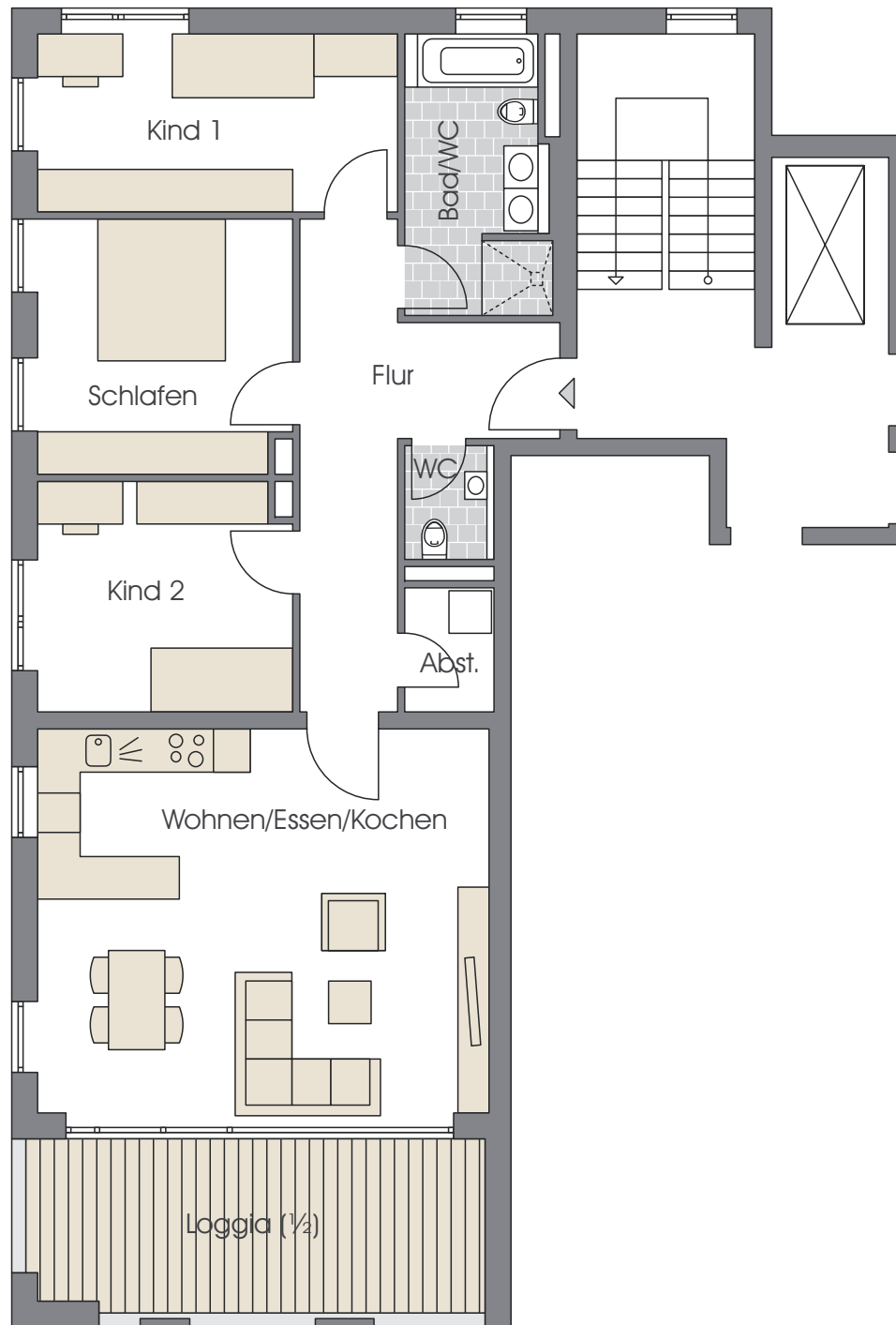
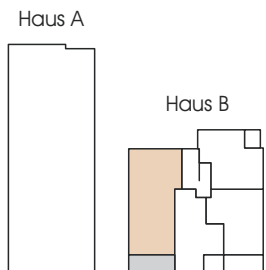


# HAUS B



## WOHNUNG B3.1

3. Obergeschoss  
4½ Zimmer

Wohnen/Essen/Kochen	35,06 m <sup>2</sup>
Schlafen	12,91 m <sup>2</sup>
Kind 1	13,04 m <sup>2</sup>
Kind 2	11,57 m <sup>2</sup>
Bad/WC	7,60 m <sup>2</sup>
WC	1,94 m <sup>2</sup>
Flur	13,02 m <sup>2</sup>
Abstellraum	2,12 m <sup>2</sup>
Loggia (½)	8,04 m <sup>2</sup>

<b>Gesamt</b>	<b>105,30 m<sup>2</sup></b>
---------------	-----------------------------