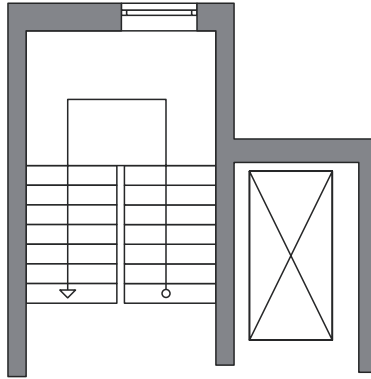


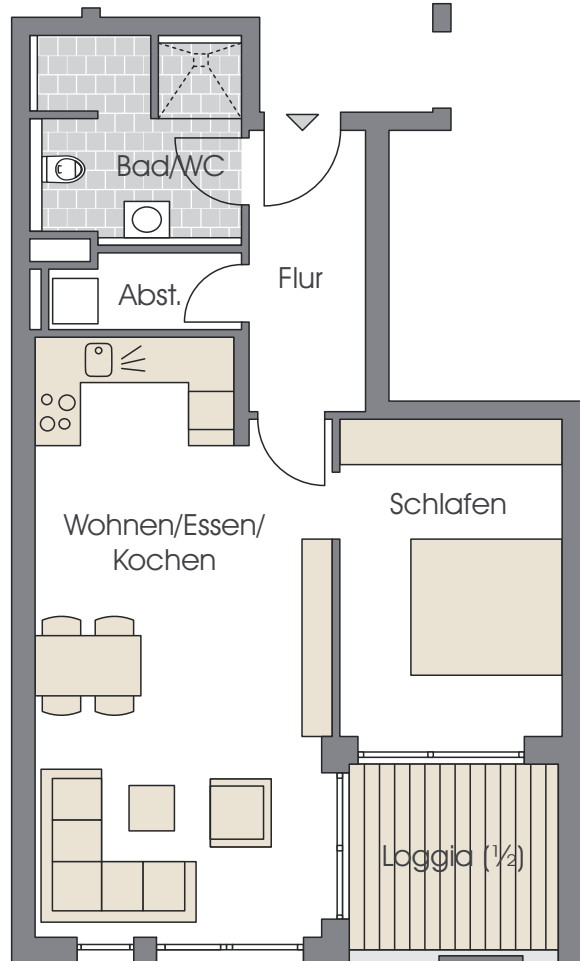
# HAUS B



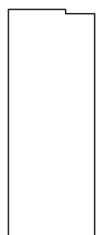
## WOHNUNG B3.2

3. Obergeschoss  
2½ Zimmer

Wohnen/Essen/Kochen	29,76 m <sup>2</sup>
Schlafen	12,42 m <sup>2</sup>
Bad/WC	7,08 m <sup>2</sup>
Flur	5,57 m <sup>2</sup>
Abstellraum	2,34 m <sup>2</sup>
Loggia (½)	3,57 m <sup>2</sup>
<b>Gesamt</b>	<b>60,74 m<sup>2</sup></b>



Haus A



Haus B

