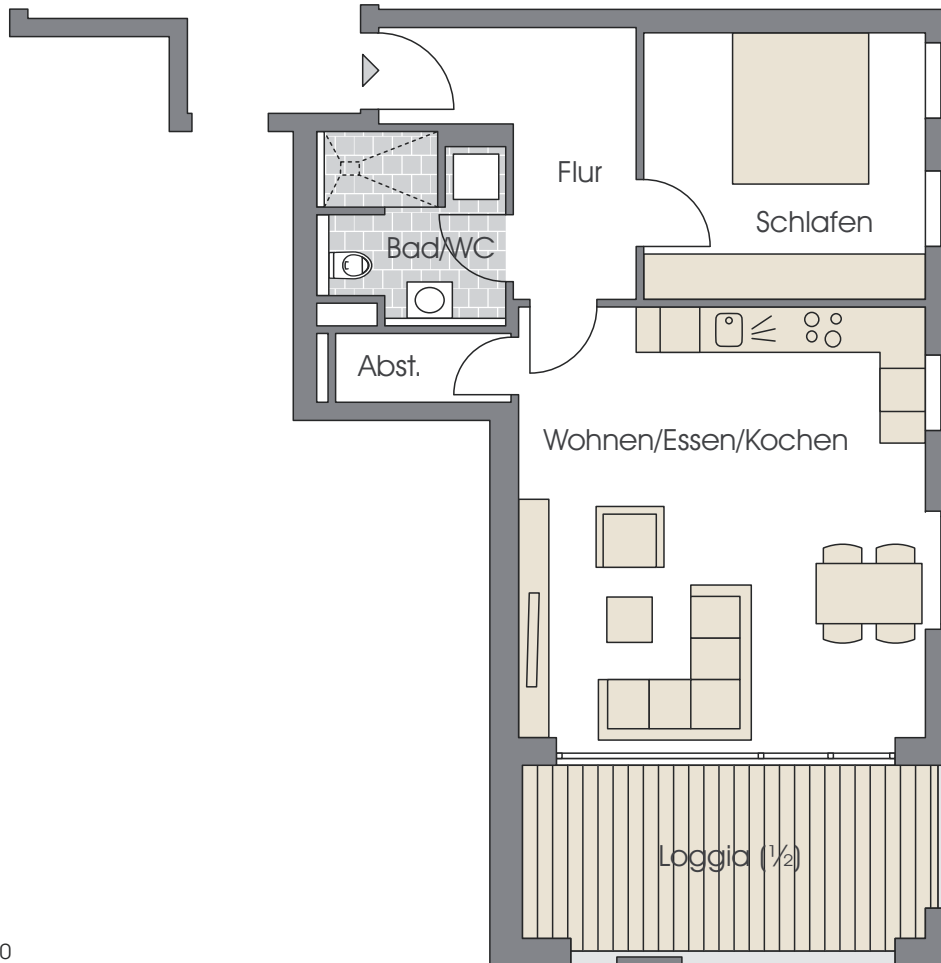
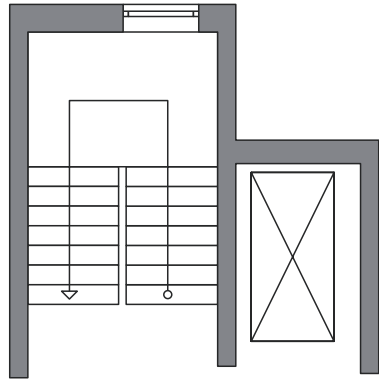


# HAUS B



## WOHNUNG B3.3

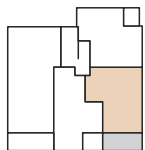
3. Obergeschoss  
2½ Zimmer

Wohnen/Essen/Kochen	31,22 m <sup>2</sup>
Schlafen	13,27 m <sup>2</sup>
Bad/WC	5,51 m <sup>2</sup>
Flur	7,90 m <sup>2</sup>
Abstellraum	2,02 m <sup>2</sup>
Loggia (½)	6,77 m <sup>2</sup>
<b>Gesamt</b>	<b>66,69 m<sup>2</sup></b>

Haus A



Haus B



Unverbindliche Illustrationen, Maßstab ca. 1:100